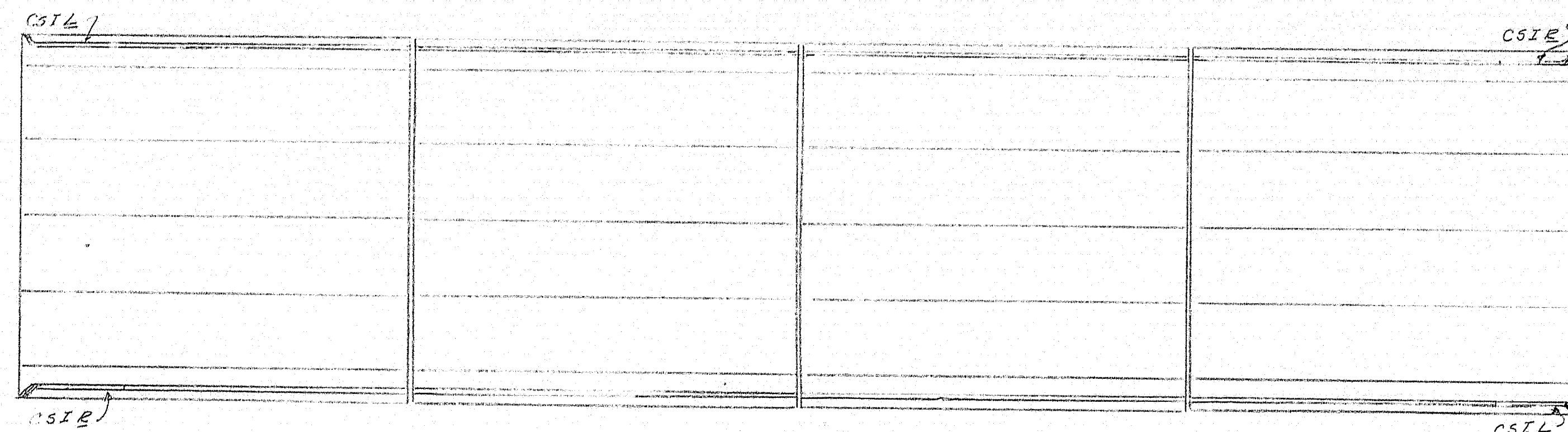
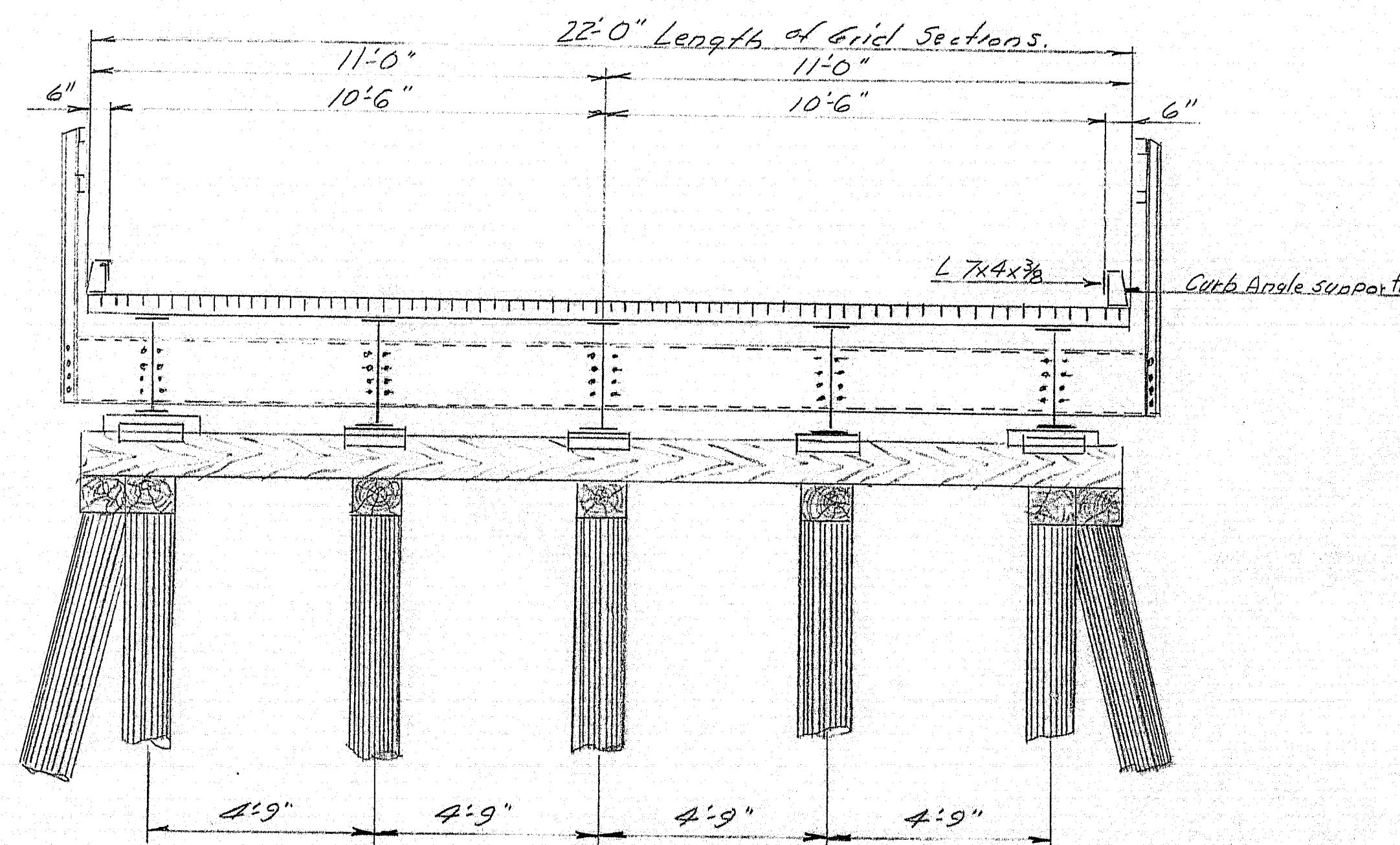


ELEVATION



PLAN

NOTE:
Place curb supports 10" from each end of curb sections and divide into 15 equal spaces. Leave 2" between sections over Piers.



SECTION AT PIERS

NOTE

REMOVE EXISTING CURB AND REPLACE WITH 12"x14" Treated Timber Planks to be cut to proper elevation to bring top of timber to elevation of end floor. Abutments 1 & 2

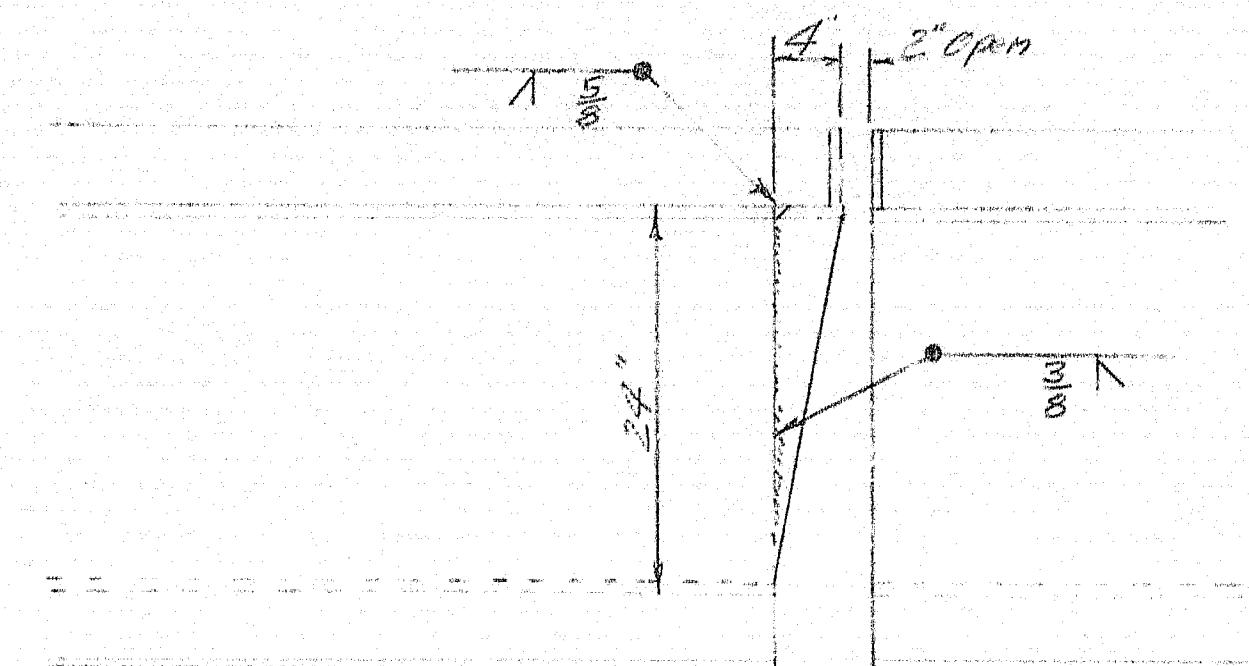
3" x 5" R Welded to grid - To be furnished as part of end sections of flooring, typ.

END SECTION DETAIL

4 Panels @ 7'-3 1/2"
1 Panels @ 4'-10"
2 Panels @ 4'-3 3/8"
1 Panel @ 4'-6 3/8"

List of Materials

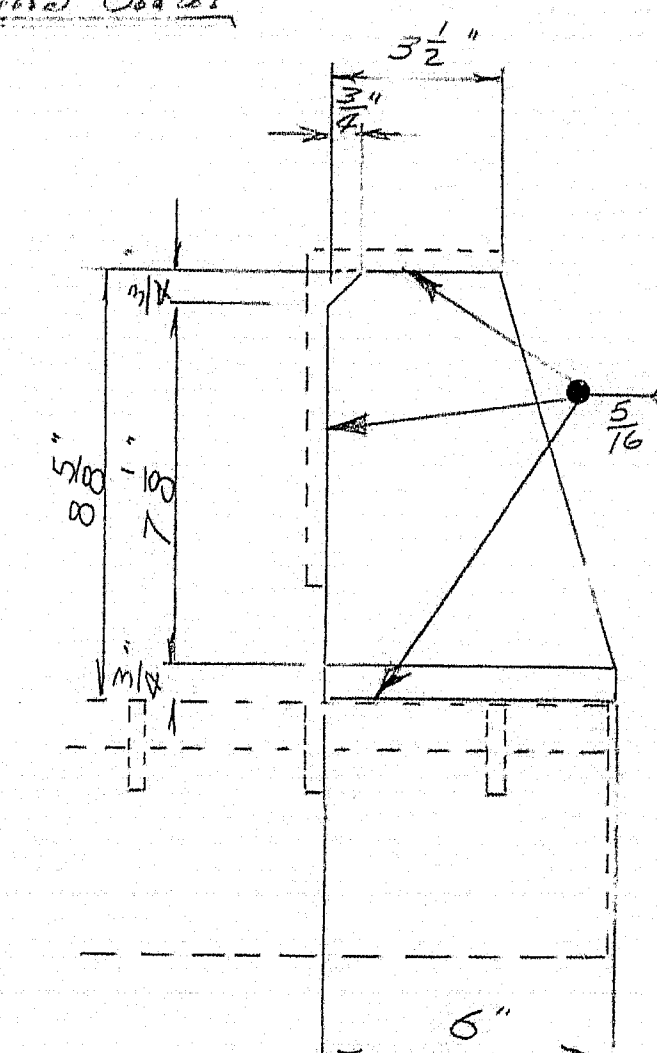
Steel Grid Floor	4224 sq ft	91,220"
Curb Angle Supports	128 Reg.	1784"
Curb Angle	536 410 ft	5252"
End Sections - Curb	4 Reg.	271"
Extension Pieces	15 Reg.	9327" ±



BEAM EXTENSION DETAIL
AT PIERS ONLY

EXTENSION PIECE DETAIL

NOTE: PIECES MAY BE CUT FROM 2"x9" BEAM OR FABRICATED FROM PLATES.

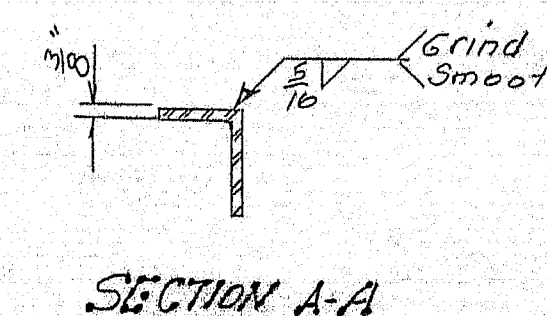


CURB ANGLE SUPPORT

128 Reg. Placed @ 3'-0"

NOTES

1. 5" Greulich Open steel Bridge Flooring as Manufactured by Harzer Division Osage Company, Inc. or approved equal @ 22" sq ft Required.
2. The 5" Grid Flooring to be attached to beams according to the Manufacturers Recommendations to be shown on shop drawings.
3. Shop drawings for the grid flooring to be submitted by the Manufacturer for approval before beginning fabrication.
4. All Structural Steel to be A36 ASTM designation and to have one Shop Coat of Red Lead Primer.



SECTION A-A

END CURB SECTION

2- CS 1/2 (As shown)
2- CS 1/2 (opposite Hand)

DESIGN - GEA TRACE - GEA CHECK - E Edmond	BRIDGE NO. 2848 SURVEY - PLOT -
STATE HIGHWAY COMMISSION BRIDGE DIVISION	
THOMPSON BRIDGE OVER DECKER COVE IN THE TOWN OF SOUTHPORT LINCOLN COUNTY STEEL GRID FLOOR DETAILS	
SHEET 105/1 AUGUSTA, MAINE AUG 1970	